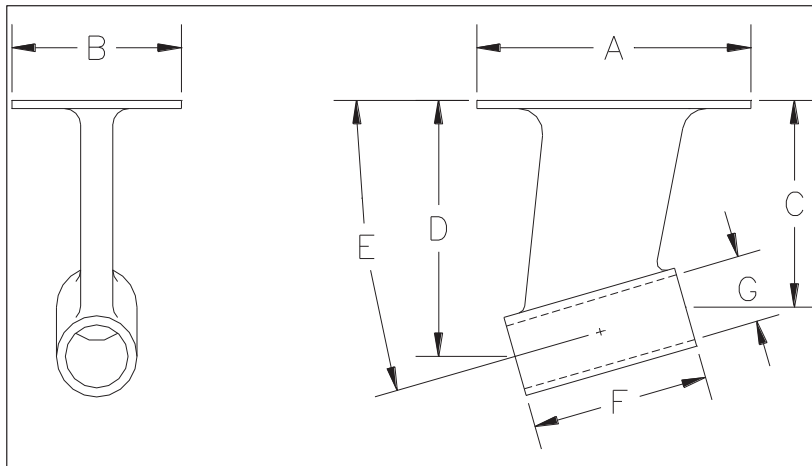


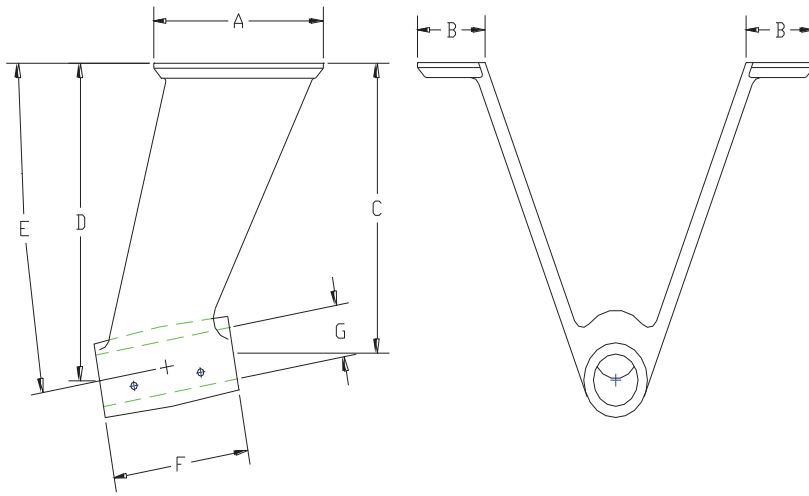
MAIN STRUTS



MAIN STRUTS

MA PART	A	B	C	D	E	F	G	WEIGHT
2-02012-L	8 1/2	5 1/4	6 1/2	7 13/16	13 3/4 D	5 1/2	2	14.6
2-02022-L	8 1/2	5 1/4	8 3/16	9 13/16	17 D	5 1/2	2	15.25
2-02032-L	8 1/2	5 1/4	7 1/2	8 13/16	13 3/4 D	5 1/2	2	15
2-02042-L	8 1/2	5 1/4	7 11/16	9 1/16	15 D	5 1/2	2	14.5
2-02052-L	8 1/2	5 1/4	9 1/8	10 5/8	16 1/4 D	5 1/2	2	16
2-02062-L	8 1/2	5 1/4	8 3/16	9 13/16	15 D	5 1/2	2	15.5
2-02072-L	8 1/2	5 1/4	7 5/16	8 1/4	15 D	5 1/2	2	15
2-02082-L	8 1/2	5 1/4	8	9 1/2	16 1/4 D	5	2	15.1
2-02092-L	8 1/2	5 1/4	7 13/16	9	17 D	5 1/2	2	14.9
2-02100-R	8	6	13 13/16	14 15/16	8 D	8	2 5/8	
2-02101-P	8	6			10 D	8	2 3/8	
2-02104-V	14	11 1/2	15 1/16	17 1/8	14 1/2 D	8 1/4	3	
2-02105-L	8	6	10 3/16	11 15/16	17 D	6	2	
2-02142-J	5 1/2	4 1/8	8 1/2	11	26 D	5 1/2	1 3/4	12.25
2-02152-L	9	6	9 3/4	12 1/16	20 1/4 D	6 3/4	2	29.6
2-02252-L	9 3/4	6 3/4	12 1/4	13 3/4	11 1/2 D	7 1/4	2	39
2-02252-L2	9 3/4	6 3/4	12 1/4	13 5/8	10 D	7 1/4	2	39
2-02262-J	7 1/2	4 7/8	8 1/16	9 3/16	13 D	5	1 3/4	12.75
2-02272-L	8 1/2	5 1/4			12 D	6 1/2	2	
2-02282-J	7 1/2	4 7/8	9 5/8	10 9/16	10 3/4 D	5	1 3/4	13.5
2-02292-L	8 1/2	5 1/4	9	10 1/4	13 1/4 D	5 1/2	2	16.6
2-02332-J	5 1/8	4	8	10 1/2	28 D	5 1/4	1 3/4	10.25
2-02342-J	7 1/2	4 7/8	8 1/2	9 3/4	15 1/4 D	5	1 3/4	13.5

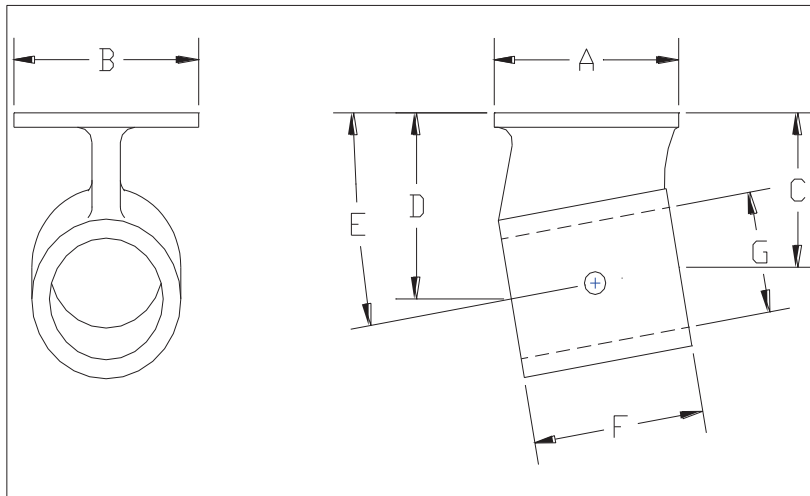
V-STRUTS



V- STRUTS

MA PART	A	B	C	D	E	F	G	V STRUT
2-02132-PV	9	3 9/16			10 D	8 1/8	2 3/8	
2-02312-PV	8	4	12	13 1/2	12 1/2 D	7 1/8	2 3/8	18 1/2
2-02442-LVP	7	4 1/2	11 1/4	12 3/4	15 D	6	2	
2-02452-LVS	7	4 1/2	11 1/4	12 3/4	15 D	6	2	
2-02502-GV	5	3	9 3/8	10 3/8	12 D	5	1 1/2	
2-02512-VV	12	4 5/8	17 1/16	18 5/8	9 D	10	3	22
2-02512-WV	12	4 5/8	17 1/16	18 5/8	9 D	10	3 1/8	22
2-02562-VV	12	4 5/8	17	18 1/8	6 3/4 D	10	3	22
2-02562-WV	12	4 5/8	17	18 1/8	6 3/4 D	10	3 1/8	22
2-02582-RV	10	4	14 1/2	16	10 1/2 D	8	2 5/8	20 1/2
2-02582-VV	10	4	14 1/2	16	10 1/2 D	8	3	20
2-02582-WV	10	4	14 1/2	16	10 1/2 D	8	3 1/8	20

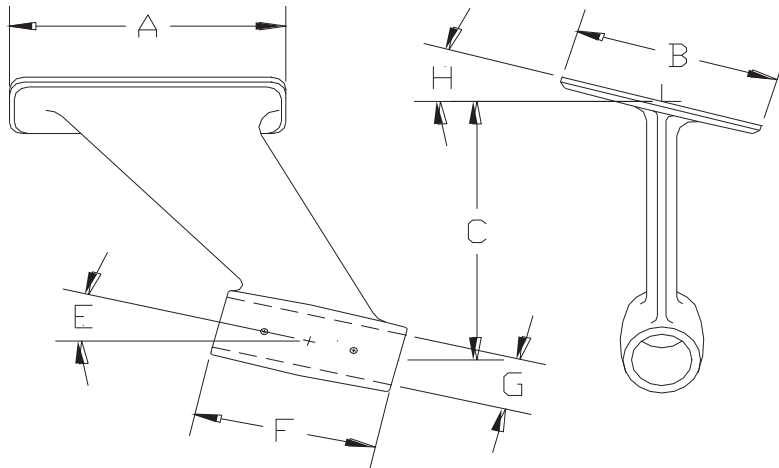
MID STRUTS



MID STRUTS

MA PART	A	B	C	D	E	F	G	WEIGHT
2-02122-P	8 5/8	5 3/8	2 3/8	3 5/8	10 D	7 1/16	2 3/8	13.75
2-02232-L	5 3/16	3 1/4	2 11/16	3 5/16	11 1/2 D	3	2	5.1
2-02232-L2	5 3/16	3 1/4	2 3/4	3 1/4	10 D	3	2	5.1
2-02232-L3	5 3/16	3 1/4	2 11/16	3 5/16	12 1/4 D	3	2	5.1
2-02232-L4	5 3/16	3 1/4	2 3/4	3 1/4	9 3/4 D	3	2	5.1
2-02232-L5	5 3/16	3 1/4	2 3/4	3 1/4	11 1/2 D	3	2	5.1
2-02232-P3	5 3/16	3 1/4	2 11/16	3 5/16	12 1/4 D	3	2 3/8	5.1
2-02322-P	5 3/4	4 1/4	3 7/8	4 5/8	12 1/2 D	3 1/2	2 3/8	8.2
2-02322-P2	5 3/4	4 1/4	4	4 1/2	8 1/2 D	3 1/2	2 3/8	802
2-02522-V	11	9 1/2	5 7/16	7	9 D	10	3	63
2-02522-W	11	9 1/2	5 7/16	7	9 D	10	3 1/8	63
2-02572-V	11	9 1/2	4 1/16	5 1/4	6 3/4 D	10	3	61
2-02572-W	11	9 1/2	4 1/16	5 1/4	6 3/4 D	10	3 1/8	61
2-02592-R	10	7	5	6 1/2	10 1/2 D	8	2 5/8	40
2-02942-P	4 1/4	5 3/4	2 5/8	3 3/8	12 D 15'	3 1/2	2 3/8	
2-02942-P2	4 1/4	5 3/4	2 11/16	3 5/16	10 D	3 1/2	2 3/8	

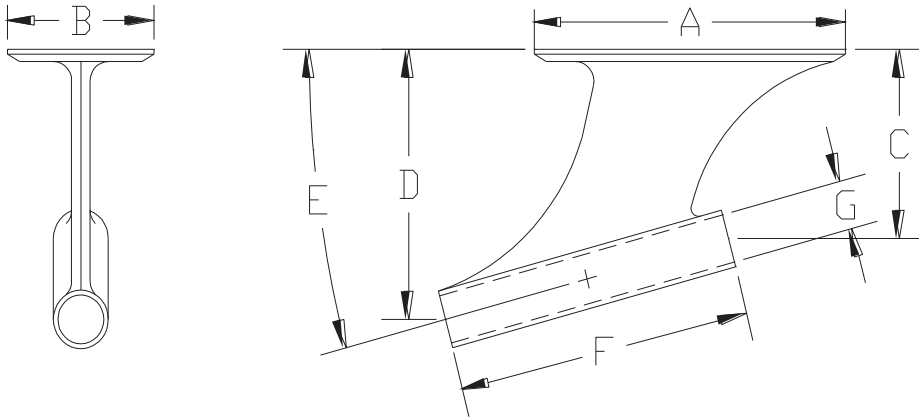
ANGLED DROP STRUTS



ANGLED DROP STRUTS

MA PART	A	B	C	D	E	F	G	H
2-02212-GP	6 1/8	6 1/8	7 3/16	8 13/16	15 1/2 D	6	1 1/2	20 D
2-02222-GS	6 1/8	6 1/8	7 3/16	8 13/16	15 1/2 D	6	1 1/2	20 D
2-02542-LS	8	6			12 D	5 1/2	2	17 D
2-02552-LP	8	6			12 D	5 1/2	2	17 D
2-02662-RP	12	9	12 1/2	14 1/2	13 3/4 D	8	2 5/8	16 D
2-02662-VP	12	9	12 1/2	14 1/2	13 3/4 D	8	3	16 D
2-02672-RS	12	9	12 1/2	14 1/2	13 3/4 D	8	2 5/8	16 D
2-02672-VS	12	9	12 1/2	14 1/2	13 3/4 D	8	3	16 D
2-02962-LS	10	6	9 5/16	10 1/2	12 D	6	2	
2-02972-LP	10	6	9 5/16	10 1/2	12 D	6	2	

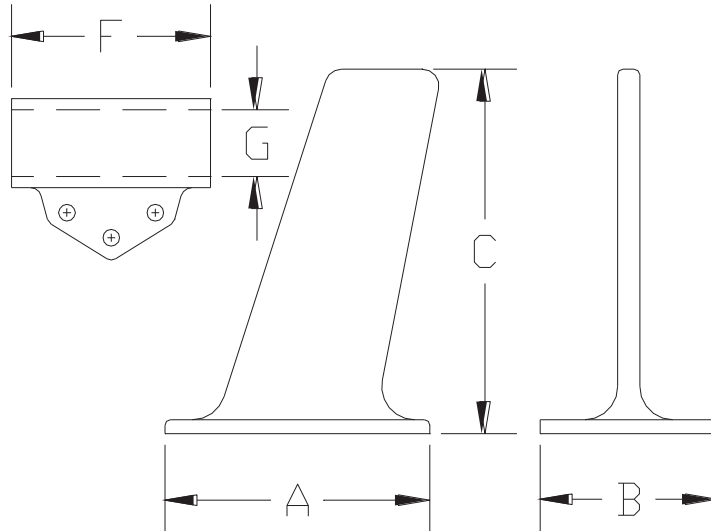
PERFORMANCE STRUTS



PERFORMANCE STRUTS

MA PART	A	B	C	D	E	F	G	WEIGHT
2-02102-E	7 1/2	3 1/2	4 7/8	6 1/8	16 D	8 1/8	1 1/4	7.9
2-02103-G	8	3 1/2	6 5/16	7	12 D	8	1 1/2	
2-02106-G	6	3 1/8	5 9/16	7 5/16	16 D	6 3/8	1 1/2	
2-02242-G	8	4	5 3/8	7 3/8	14 1/2 D	7 3/4	1 1/2	10.1
2-02352-G	8 5/8	4			15 D	7 7/8	1 1/2	9.75
2-02362-E	8 1/2	4	4 1/8	6 3/16	15 D	8	1 1/4	7.6
2-02372-G	8 1/2	4	4 1/8	6 3/16	15 D	8	1 1/2	8.1
2-02392-E	8 1/2	4	4 3/4	7	16 D	8	1 1/4	7.65
2-02402-G	8 1/2	4	4 3/4	7	16 D	8	1 1/2	7.9
2-02612-E	6	4	5 1/2	7 1/8	16 D	6	1 1/2	11.5
2-02622-G	6	4	7 3/4	9 5/16	15 D	6	1 1/2	13
2-02682-E	6	3 1/8	5 9/16	7 5/16	16 D	6 3/8	1 1/2	7.86
2-02682-F	6	3 1/8	5 9/16	7 5/16	16 D	6 3/8	1 3/8	7.86
2-02842-E	6	3 1/8	5 1/2	7 5/16	16 D	6 3/8	1 1/4	
2-02842-G	6	3 1/8			16 D	6 3/8	1 1/2	

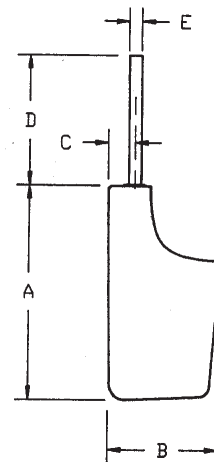
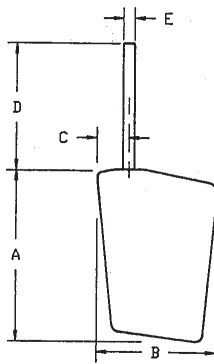
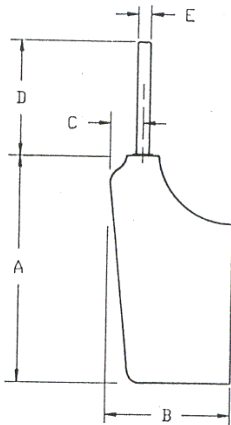
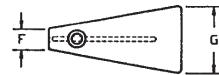
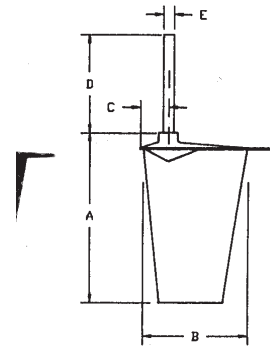
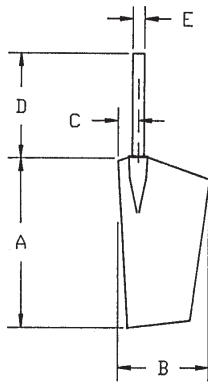
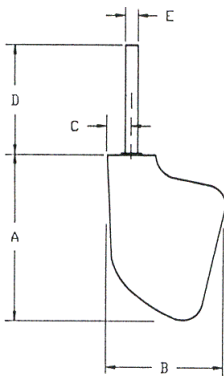
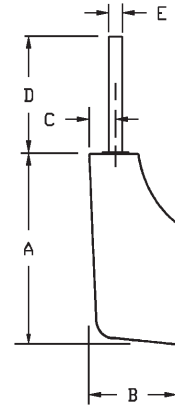
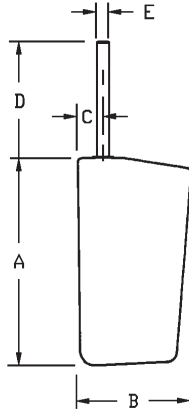
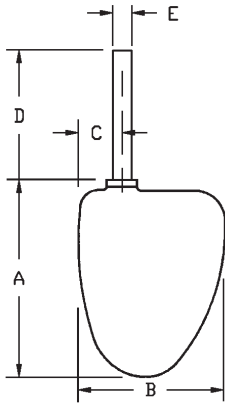
ADJUSTABLE STRUTS



ADJUSTABLE STRUTS

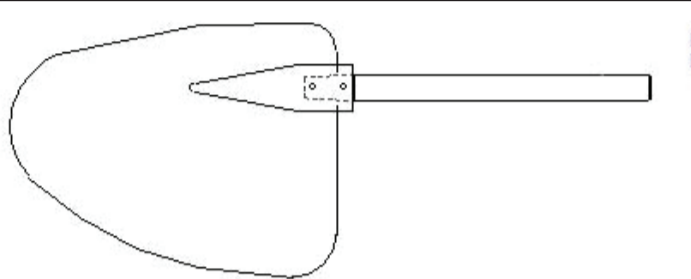
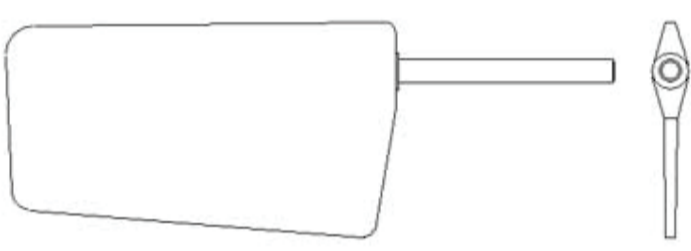
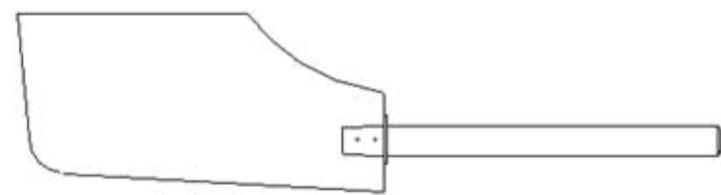
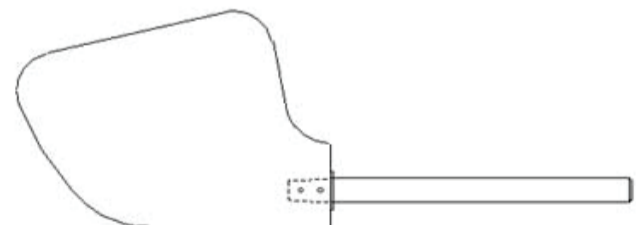
MA PART	A	B	C	F	G	WEIGHT
2-02172	6	4	8 3/16			5.25
2-02182-G				4 1/2	1 1/2	3
2-02192	8 1/2	5 1/4	9			16.5
2-02192-2	8 1/2	5 1/4	9			
2-02202-L				5 1/8	2	
2-02662-VP	12	9	12 1/2	14 1/2	13 3/4 D	8
2-02672-RS	12	9	12 1/2	14 1/2	13 3/4 D	8
2-02672-VS	12	9	12 1/2	14 1/2	13 3/4 D	8
2-02962-LS	10	6	9 5/16	10 1/2	12 D	6
2-02972-LP	10	6	9 5/16	10 1/2	12 D	6

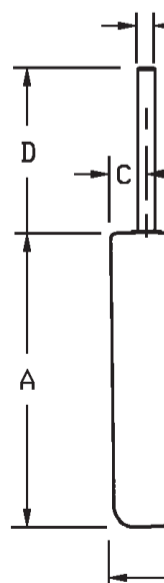
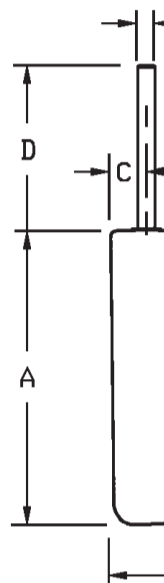
RUDDERS



RUDDERS

** Post length per Customer spec.

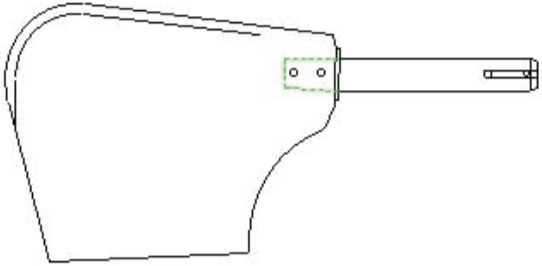
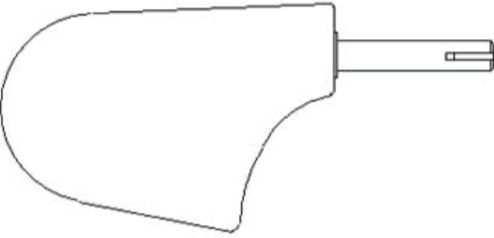
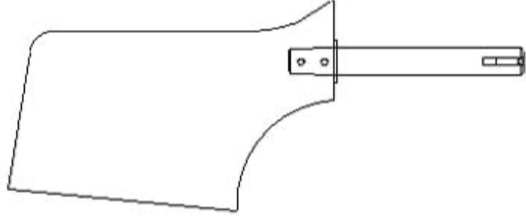
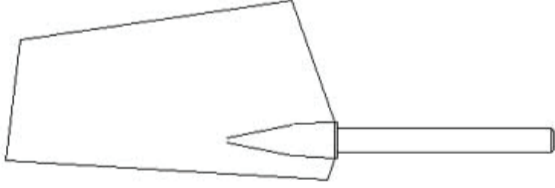
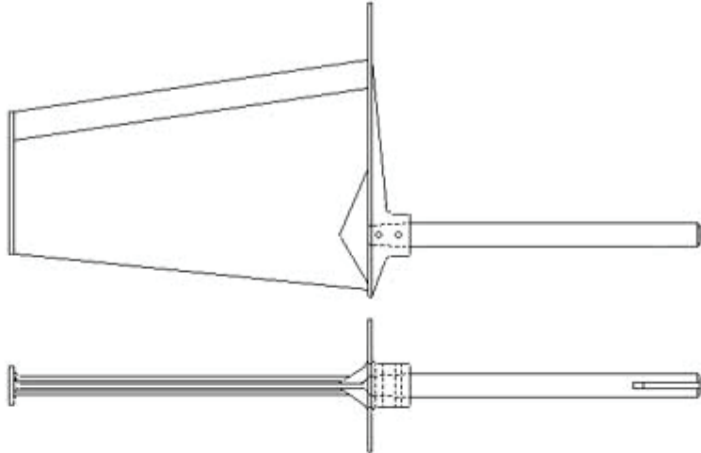
RUDDERS						
W/O POST	W/ POST	A	B	C	D	E
						
2-01032-E	3-01032-E	16 1/2	12	3 1/4	**	1-1/4
2-01062-E	3-01062-E	19 1/2	15 1/2	3 1/2	**	1-1/4
2-01062-G	3-01062-G	19 1/2	15 1/2	3 1/2	**	1-1/2
						
2-01012-E	3-01012-E	21	11-1/2	2-5/8	**	1-1/4
2-01112-G	3-01112-G	21	11-1/2	2-5/8	**	1-1/2
3-01122-G	3-01122-G	22 1/2	16	4 1/4	**	1 1/2
						
2-01082-E	3-01082-E	16	7 3/4	2 1/4	**	1 1/4
2-01232-G	3-01232-G	24	9 1/2	2 3/8	**	1 1/2
						
2-01042-C	3-01042-C	16	11-3/4	2 -1/2	**	1
2-01042-E	3-01042-E	16	11-3/4	2-1/2	**	1-1/4
2-01042-G	3-01042-G	16	11-3/4	2-1/2	**	1-1/2
2-01052-C	3-01052-C	14-3/4	10	2-3/8	**	1
2-01052-E	3-01052-E	14 3/4	10	2 3/8	**	1-1/4

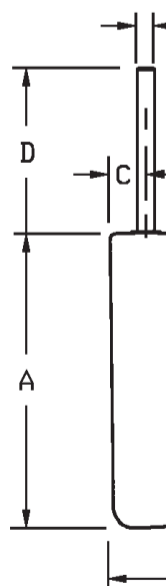
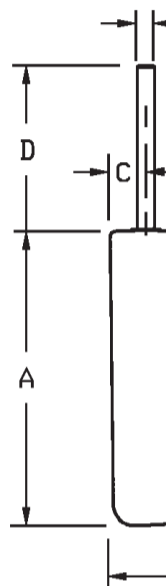


(continued)

RUDDERS

** Post length per Customer spec.

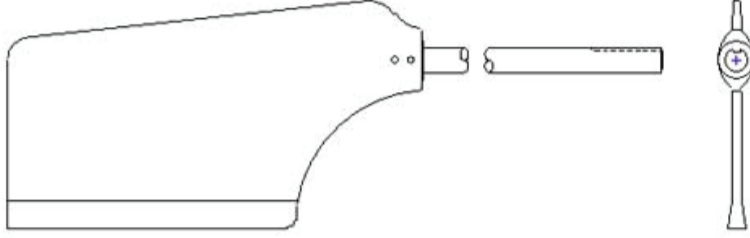
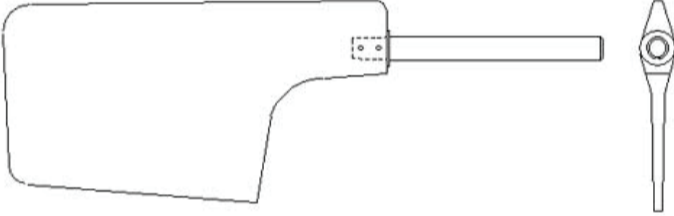
RUDDERS						
W/O POST	W/ POST	A	B	C	D	E
						
2-01172-D	3-01172-D	12-1/4	8-3/4	2	**	1 1/8
						
2-01142-C	3-01142-C	12	8-3/4	2-1/8	**	1
2-01142-D	3-01142-D	12	8-3/4	2-1/8	**	1-1/8
						
2-01182-C	3-01182-C	13-1/2	8-3/4	2-1/2	**	1
2-01182-D	3-01182-D	13-1/2	8-3/4	2-1/2	**	1-1/8
						
2-01242-C	3-01242-C	18	9-1/2	2-1/4	**	1
2-01242-E	3-01242-E	18	9-1/2	2-1/4	**	1-1/4
						
2-01072-E	3-01072-E	21-1/4	12	3-5/8	**	1-1/4

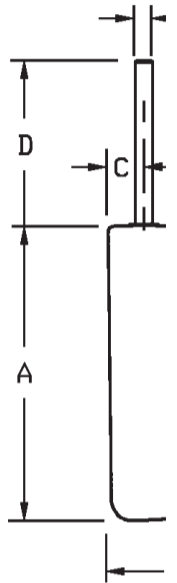


(continued)

RUDDERS

** Post length per Customer spec.

RUDDERS						
W/O POST	W/ POST	A	B	C	D	E
						
2-01092-E	3-01092-E	25-3/4	14-1/4	3-3/4	**	1-1/4
2-01092-G	3-01092-G	25-3/4	14-1/4	3-3/4	**	1-1/2
2-01102-E	3-01102-E	21	14	3-3/4	**	1-1/4
2-01102-G	3-01102-G	21	14	3-3/4	**	1-1/2
						
2-01152-E	3-01152-E	21	11-1/2	2-1/2	**	1-1/4
2-01152-G	3-01152-G	21	11-1/2	2-1/2	**	1-1/2
2-01222-D	3-01222-D	15-1/2	10-1/2	2-3/8	**	1-1/8
2-01222-E	3-01222-E	15-1/2	10-1/2	2-3/8	**	1-1/4



BOTTOM MOUNT RUDDER PORTS



Bottom Mount Rudder Ports

MA PART # W/O BACK PLATE	W/ BACK PLATE	POST DIAMETER	FLANGE SIZE	BARREL LENGTH	ANGLE
3-03171-C	4-03171-C	1	4 x 4	3 1/2	90°
3-03171-D2	4-03171-D2	1-1/8	4 x 4	3 1/2	90°
3-03031-E3	4-03031-E3	1-1/4	4 1/2 x 4 1/2	4	90°
3-03051-E	4-03051-E	1-1/4	4 3/8 x 4 3/8	6	5°
3-03071-E	4-03071-E	1-1/4	4 3/8 x 4 3/8	3 3/4	8.5°
3-03121-E	4-03121-E	1-1/4	4 3/8 x 4 3/8	3 3/4	11°
3-03211-E	4-03211-E	1-1/4	4 3/8 x 4 3/8	3 3/4	15°
3-03181-E	4-03181-E	1-1/4	4 3/8 x 4 3/8	3 3/4	19°
3-03161-G	4-03161-G	1-1/2	5 1/8 x 5 1/8	5	90°
3-03081-G	4-03081-G	1-1/2	6 x 6	6	7°
3-03131-G	4-03131-G	1-1/2	6 x 6	5	10°
3-03201-G	4-03201-G	1-1/2	6 x 6	6	15°

TOP MOUNT RUDDER PORTS



Top Mount Rudder Ports

MA PART # W/O BACK PLATE	W/ BACK PLATE	POST DIAMETER	FLANGE SIZE	BARREL LENGTH	ANGLE
3-03151-C	4-03151-C	1	3-3/4 x 3 3/4	1-3/4	90°
3-03011-C	4-03011-C	1	3-3/4 x 3 3/4	4	90°
3-03011-D	4-03011-D	1-1/8	3-3/4 x 3 3/4	4	90°
3-03031-E1	4-03031-E1	1-1/4	4-1/4 x 4 1/4	4	90°
3-03041-F	4-03041-F	1-3/8	7 x 3-3/4	5	90°
3-03041-G	4-03041-G	1-1/2	6-3/4 x 4-1/2	5	90°

**RUDDER ARMS, RUDDER COLLAR
& TOP RUDDER BEARING**



RUDDER ARMS

MA PART	POST SIZE	OVERALL LENGTH	CENTER CENTER	CLEVIS HOLE
<u>3-04092-C</u>	1	7-7/8	6-1/8	3/8
<u>3-04092-D</u>	1-1/8	7-7/8	6-1/8	3/8
<u>3-04022-E</u>	1-1/4	9-5/8	6-7/8	1/2
<u>3-04022-F</u>	1-3/8	9- 5/8	6-7/8	1/2
<u>3-04032-G1</u>	1-1/2	11-5/8	8-3/4	1/2
<u>3-04082-G</u>	1-1/2	13-1/8	10-3/8	1/2

RUDDER COLLAR

MA PART	POST
<u>3-05011-C</u>	1
<u>3-05011-D</u>	1-1/8
<u>3-05021-E</u>	1-1/4
<u>3-05021-F</u>	1-3/8
<u>3-05031-G</u>	1-1/2
<u>3-05031-L</u>	2

TOP RUDDER BEARING

MA PART	POST
<u>2-06011-C</u>	1
<u>2-06011-D</u>	1-1/8
<u>2-06021-E</u>	1-1/4
<u>2-06031-F</u>	1-3/8
<u>2-06031-G</u>	1-1/2
<u>2-06031-L</u>	2

SHAFTS



Marine Associates offers the finest quality precision machined and straightened shafting. All are custom machined, threaded and radius keyways cut to fit your needs. All shafting is machined to S.A.E. J755 standards. A worn or bent shaft can play havoc with even the finest engine and propeller combination. Install a new precision machined and straightened shaft to reduce vibration and improve all around performance.

We recommend very strongly that you consider switching your shaft and coupling from a straight bore to a tapered coupling end. A tapered bore coupling installs easier and is truer than a straight bore. If you do continue to use a straight coupling, we suggest you have it fit to your new shaft by our machinists.

Marine Associates also stocks the the shaft nuts, keys and cotter pins.



FLUSH STYLE SHAFT LOG

MA Part # w/Stuff Box	MA Part # w/o Stuff Box	Shaft Diameter	Base Length	Base Width	Angle	Hose Size	Thread
4-08203-CR	2-08203	1	8 1/2	3 1/4	14°	1 3/4	
4-08203-CL	2-08203	1	8 1/2	3 1/4	14°	1 3/4	
4-08203-DR	2-08203	1 1/8	8 1/2	3 1/4	14°	1 3/4	
4-08203-DL	2-08203	1 1/8	8 1/2	5	14°	1 3/4	
4-08011-ER	<u>2-08011</u>	1 1/4	14	5	17°	2 1/4	
4-08011-EL	<u>2-08011</u>	1 1/4	14	5	17°	2 1/4	
4-08021-FR	4-08021-FR	1 3/8	18	5	15°	2 1/2	
4-08021-FL	4-08021-FL	1 3/8	18	5	15°	2 1/2	
4-08021-GR	4-08021-GR	1 1/2	18	5	15°	2 1/2	
4-08021-GL	4-08021-GL	1 1/2	18	5	15°	2 1/2	



OFFSET STYLE SHAFT LOG

MA Part # w/Stuff Box	MA Part # w/o Stuff Box	Shaft Diameter	Base Length	Base Width	Angle	Hose Size	Thread
4-08031-ER	<u>2-08031</u>	1-1/4	16-1/4	6-1/2	15°	2 1/4	
4-08031-EL	<u>2-08031</u>	1-1/4	16-1/4	6-1/2	15°	2 1/4	
4-08041-FR	2-08041	1-3/8	16-1/4	6	17°	2 1/2	
4-08041-FL	2-08041	1-3/8	16-1/4	6	17°	2 1/2	
4-08041-GR	2-08041	1-1/2	16-1/4	6	17°	2 1/2	
4-08041-GL	2-08041	1-1/2	16-1/4	6	17°	2 1/2	



THRU-HULL STYLE SHAFT LOG

MA Part # w/Stuff Box	MA Part # w/o Stuff Box	Shaft Diameter	Base Diameter	Length	Hose Size	Thread
4-08181-CR	<u>3-08181</u>	1	2 1/2	2-3/4	1 3/4	RH
4-08181-CL	<u>3-08181</u>	1	2 1/2	2-3/4	1 3/4	LH
4-08181-DR	<u>3-08181</u>	1 1/8	2 1/2	2-3/4	1 3/4	RH
4-08181-DL	<u>3-08181</u>	1 1/8	3 1/4	2-3/4	1 3/4	LH
4-08061-ER	<u>3-08061</u>	1 1/4	3 1/4	3-5/8	2	RH
4-08061-EL	<u>3-08061</u>	1 1/4	3 1/2	3-5/8	2	LH
4-08191-FR	3-08191	1 3/8	3 1/2	4-1/4	2 1/2	RH
4-08191-FL	3-08191	1 3/8	3 1/2	4-1/4	2 1/2	LH
4-08191-GR	3-08191	1 1/2	3 1/2	4-1/4	2 1/2	RH
4-08191-GL	3-08191	1 1/2	3 1/2	4-1/4	2 1/2	LH
4-08151-JR	<u>3-08151</u>	1 3/4	4 3/4	5-5/8	3	RH
4-08151-JL	<u>3-08151</u>	1 3/4	4 3/4	5-5/8	3	LH
4-08151-LR	<u>3-08151</u>	2	4 3/4	5-5/8	3	RH
4-08151-LL	<u>3-08151</u>	2	4 3/4	5-5/8	3	LH



EXTERNAL FLANGE STYLE SHAFT LOG

MA Part # w/Stuff Box	MA Part # w/o Stuff Box	Shaft Diameter	Flange Width	Flange Length	Height	Hose Size	Thread
4-08211-CR	<u>2-08213</u>	1	3-1/8	2-7/8	3-1/8	1 3/4	
4-08211-CL	<u>2-08213</u>	1	3-1/8	2-7/8	3-1/8	1 3/4	
4-08211-DR	<u>2-08213</u>	1 1/8	3-1/8	2-7/8	3-1/8	1 3/4	
4-08211-DL	<u>2-08213</u>	1 1/8	3-1/8	2-7/8	3-1/8	1 3/4	
4-08071-ER	<u>2-08071</u>	1 1/4	5-1/2	3-1/2	3-1/2	2 1/4	
4-08071-EL	<u>2-08071</u>	1 1/4	5-1/2	3-1/2	3-1/2	2 1/4	
4-08081-FR	<u>2-08081</u>	1 3/8	5-1/2	3-1/2	3-1/2	2 1/2	
4-08081-FL	<u>2-08081</u>	1 3/8	5-1/2	3-1/2	3-1/2	2 1/2	
4-08081-GR	<u>2-08081</u>	1 1/2	5-1/2	3-1/2	3-1/2	2 1/2	
4-08081-GL	<u>2-08081</u>	1 1/2	5-1/2	3-1/2	3-1/2	2 1/2	
4-08141-JR	<u>2-08141</u>	1 3/4	6-1/2	4-1/2	3-1/2	3	
4-08141-JL	<u>2-08141</u>	1 3/4	6-1/2	4-1/2	3-1/2	3	
4-08141-LR	<u>2-08141</u>	2	6-1/2	4-1/2	3-1/2	3	
4-08141-LL	<u>2-08141</u>	2	6-1/2	4-1/2	3-1/2	3	
4-08201-NR	4-08201-NR	2 1/4	8	5-3/4	5	4	
4-08201-NL	4-08201-NL	2 1/4	8	5-3/4	5	4	
4-08201-QR	4-08201-QR	2 1/2	8	5-3/4	5	4	
4-08201-QL	4-08201-QL	2 1/2	8	5-3/4	5	4	



INTERNAL FLANGE STYLE SHAFT LOG

MA PART	SHAFT SIZE	Shaft Diameter	Flange Width	Flange Length	Height	Hose Size	Thread
4-08091-ER	2-08091	1 1/4	6-1/2	3-1/4	3-3/4	2 1/4	
4-08091-EL	2-08091	1 1/4	6-1/2	3-1/4	3-3/4	2 1/4	
4-08101-FR	<u>2-08101</u>	1 3/8	6 1/2	3-1/2	3-3/4	2 1/2	
4-08101-FL	<u>2-08101</u>	1 3/8	6 1/2	3-1/2	3-3/4	2 1/2	
4-08101-GR	<u>2-08101</u>	1 1/2	6 1/2	3-1/2	3-3/4	2 1/2	
4-08101-GL	<u>2-08101</u>	1 1/2	6 1/2	3-1/2	3-3/4	2 1/2	

MALE PILOT STRAIGHT COUPLINGS

MA Part Number	Flange Diameter	Pilot Diameter	Bolt Circle	Bolt Size	Shaft Diameter	Keyway Width	# of Bolt Holes
BORG-WARNER, HIRTH, ALLISON & ZF							
40-1400-A	4	2-1/2	3-1/4	3/8	3/4	3/16	4
40-1400-B	4	2-1/2	3-1/4	3/8	7/8	1/4	4
40-1400-C	4	2-1/2	3-1/4	3/8	1	1/4	4
40-1400-D	4	2-1/2	3-1/4	3/8	1-1/8	1/4	4
40-1400-E	4	2-1/2	3-1/4	3/8	1-1/4	5/16	4
40-1400-F	4	2-1/2	3-1/4	3/8	1-3/8	5/16	4
40-1400-G	4	2-1/2	3-1/4	3/8	1-1/2	3/8	4
40-1500-C	5	2-1/2	4-1/4	7/16	1	1/4	4
40-1500-C1	5	2-1/2	4-1/4	7/16	1	1/4	8
40-1500-D	5	2-1/2	4-1/4	7/16	1-1/8	1/4	4
40-1500-E	5	2-1/2	4-1/4	7/16	1-1/4	5/16	4
40-1500-E2	5	2-1/2	4-1/4	7/16	1-1/4	5/16	8
40-1500-F	5	2-1/2	4-1/4	7/16	1-3/8	5/16	4
40-1500-F2	5	2-1/2	4-1/4	7/16	1-3/8	5/16	8
40-1500-G	5	2-1/2	4-1/4	7/16	1-1/2	3/8	4
40-1500-G2	5	2-1/2	4-1/4	7/16	1-1/2	3/8	8
40-1500-J	5	2-1/2	4-1/4	7/16	1-3/4	7/16	4
40-1500-J3	5	2-1/2	4-1/4	7/16	1-3/4	7/16	8
40-1500-L	5	2-1/2	4-1/4	7/16	2	1/2	4
40-1500-L	5	2-1/2	4-1/4	7/16	2	1/2	4
PARAGON							
40-2400-AL	4	2	3-1/4	3/8	3/4	3/16	4
40-2400-BL	4	2	3-1/4	3/8	7/8	1/4	4
40-2400-CL	4	2	3-1/4	3/8	1	1/4	4
40-2400-DL	4	2	3-1/4	3/8	1-1/8	1/4	4
40-2400-EL	4	2	3-1/4	3/8	1-1/4	5/16	4
40-2400-FL	4	2	3-1/4	3/8	1-3/8	5/16	4
40-2400-GL	4	2	3-1/4	3/8	1-1/2	3/8	4
40-2400-AR	4	2-5/8	3-1/4	3/8	3/4	3/16	4
40-2400-BR	4	2-5/8	3-1/4	3/8	7/8	1/4	4
40-2400-CR	4	2-5/8	3-1/4	3/8	1	1/4	4
40-2400-DR	4	2-5/8	3-1/4	3/8	1-1/8	1/4	4
40-2400-ER	4	2-5/8	3-1/4	3/8	1-1/4	5/16	4

FEMALE PILOT STRAIGHT COUPLINGS

MA Part Number	Flange Diameter	Pilot Diameter	Bolt Circle	Bolt Size	Shaft Diameter	Keyway Width	# of Bolt Holes
TWIN DISC, CAPITAL, ALLISON							
40-3434-C	4-3/4	2-1/2	3-7/8	7/16	1	1/4	6
40-3434-D	4-3/4	2-1/2	3-7/8	7/16	1-1/8	1/4	6
40-3434-E	4-3/4	2-1/2	3-7/8	7/16	1-1/4	5/16	6
40-3434-F	4-3/4	2-1/2	3-7/8	7/16	1-3/8	5/16	6
40-3434-G	4-3/4	2-1/2	3-7/8	7/16	1-1/2	3/8	6
40-3434-J	4-3/4	2-1/2	3-7/8	7/16	1-3/4	7/16	6
40-3434-J1	4-3/4	2-1/2	3-7/8	7/16	1-3/4	7/16	6
40-3434-J2	4-3/4	2-1/2	3-7/8	12MM	1-3/4	7/16	6
40-3434-L	4-3/4	2-1/2	3-7/8	7/16	2	1/2	6
40-3434-L1	4-3/4	2-1/2	3-7/8	12MM	2	1/2	6
40-3534-E	5-3/4	3	4-3/4	5/8	1-1/4	5/16	6
40-3534-F	5-3/4	3	4-3/4	5/8	1-3/8	5/16	6
40-3534-G	5-3/4	3	4-3/4	5/8	1-1/2	3/8	6
40-3534-G1	5-3/4	3	4-3/4	1/2	1-1/2	3/8	6
40-3534-J	5-3/4	3	4-3/4	5/8	1-3/4	7/16	6
40-3534-J1	5-3/4	3	4-3/4	5/8	1-3/4	7/16	6
40-3534-L	5-3/4	3	4-3/4	1/2	2	1/2	6
40-3714-G	7-1/4	3-3/4	6	5/8	1-1/2	3/8	6
40-3714-J	7-1/4	3-3/4	6	5/8	1-3/4	7/16	6
40-3714-L	7-1/4	3-3/4	6	5/8	2	1/2	6
40-3714-N	7-1/4	3-3/4	6	5/8	2-1/4	9/16	6
40-3714-Q	7-1/4	3-3/4	6	5/8	2-1/2	5/8	6
40-3900-G	9	6	7-1/2	7/8	1-1/2	3/8	8
40-3900-J	9	6	7-1/2	7/8	1-3/4	7/16	8
40-3900-L	9	6	7-1/2	7/8	2	1/2	8
40-3900-N	9	6	7-1/2	7/8	2-1/4	9/16	8
40-3900-Q	9	6	7-1/2	7/8	2-1/2	5/8	8
VOLVO							
40-6400-C	3.937	2.364	3.150	7/16	1	1/4	4
40-6400-D	3.937	2.364	3.150	7/16	1-1/8	1/4	4
40-6400-E	3.937	2.364	3.150	7/16	1-1/4	5/16	4

MALE PILOT TAPERED COUPLINGS

MA Part Number	Flange Diameter	Pilot Diameter	Bolt Circle	Bolt Size	Shaft Diameter	Keyway Width	# of Bolt Holes
BORG-WARNER, ALLISON & ZF							
41-1400-CZ	4	2-1/2	3-1/4	3/8	1	1/4	4
41-1400-DZ	4	2-1/2	3-1/4	3/8	1-1/8	1/4	4
41-1400-EZ	4	2-1/2	3-1/4	3/8	1-1/4	5/16	4
41-1500-CZ	5	2-1/2	4-1/4	7/16	1	1/4	4
41-1500-DZ	5	2-1/2	4-1/4	7/16	1-1/8	1/4	4
41-1500-EZ	5	2-1/2	4-1/4	7/16	1-1/4	5/16	4
41-1500-FZ	5	2-1/2	4-1/4	7/16	1-3/8	5/16	4
41-1500-GZ	5	2-1/2	4-1/4	7/16	1-1/2	3/8	4
41-1500-GZ1	5	2-1/2	4-1/4	7/16	1-1/2	3/8	8
41-1500-JZ	5	2-1/2	4-1/4	7/16	1-3/4	7/16	4
41-1500-JZ1	5	2-1/2	4-1/4	7/16	1-3/4	7/16	8
HIRTH (REVERSE TAPER)							
41-4500-DZ	5	2-1/2	4-1/4	7/16	1-1/8	1/4	4
41-4500-EZ	5	2-1/2	4-1/4	7/16	1-1/4	5/16	4
41-4500-FZ	5	2-1/2	4-1/4	7/16	1-3/8	5/16	4
41-4500-GZ	5	2-1/2	4-1/4	7/16	1-1/2	3/8	4
41-4500-JZ	5	2-1/2	4-1/4	7/16	1-3/4	7/16	4
PRM601							
41-7600-FZ	6	3	4-3/4	1/2	1-3/8	5/16	6
41-7600-GZ	6	3	4-3/4	1/2	1-1/2	3/8	6
41-7600-LZ	6	3	4-3/4	1/2	2	1/2	6

FEMALE PILOT TAPERED COUPLINGS

MA Part Number	Flange Diameter	Pilot Diameter	Bolt Circle	Bolt Size	Shaft Diameter	Keyway Width	# of Bolt Holes
SAE STANDARD (TWIN DISC., CAPITAL, ALLISON, ZF)							
41-3434-EZ	4-3/4	2-1/2	3-7/8	7/16	1-1/4	5/16	6
41-3434-FZ	4-3/4	2-1/2	3-7/8	7/16	1-3/8	5/16	6
41-3434-FZ1	4-3/4	2-1/2	3-7/8	7/16	1-3/8	5/16	8
41-3434-GZ	4-3/4	2-1/2	3-7/8	7/16	1-1/2	3/8	6
41-3434-GZ1	4-3/4	2-1/2	3-7/8	7/16	1-1/2	3/8	8
41-3434-GZ2	4-3/4	2-1/2	3-7/8	12MM	1-1/2	3/8	6
41-3434-JZ	4-3/4	2-1/2	3-7/8	7/16	1-3/4	7/16	6
41-3434-JZ1	4-3/4	2-1/2	3-7/8	7/16	1-3/4	7/16	8
41-3434-LZ	4-3/4	2-1/2	3-7/8	7/16	2	1/2	6
41-3434-LZ1	4-3/4	2-1/2	3-7/8	7/16	2	1/2	8
41-3434-JZ	4-3/4	2-1/2	3-7/8	7/16	1-3/4	7/16	6
41-3434-LZ	4-3/4	2-1/2	3-7/8	7/16	2	1/2	6
41-3534-EZ	5-3/4	3	4-3/4	5/8	1-1/4	5/16	6
41-3534-FZ	5-3/4	3	4-3/4	5/8	1-3/8	5/16	6
41-3534-GZ	5-3/4	3	4-3/4	5/8	1-1/2	3/8	6
41-3534-JZ	5-3/4	3	4-3/4	5/8	1-3/4	7/16	6
41-3534-LZ	5-3/4	3	4-3/4	5/8	2	1/2	6
41-3534-NZ	5-3/4	3	4-3/4	5/8	2-1/4	9/16	6
41-3714-JZ	7-1/4	3-3/4	6	3/4	1-3/4	7/16	6
41-3714-LZ	7-1/4	3-3/4	6	3/4	2	1/2	6
41-3714-NZ	7-1/4	3-3/4	6	3/4	2-1/4	9/16	6
41-3714-NZ1	7-1/4	3-3/4	6	5/8	2-1/4	9/16	8
41-3714-QZ	7-1/4	3-3/4	6	3/4	2-1/2	5/8	6
41-3714-QZ1	7-1/4	4-3/4	6-1/8	11/16	2-1/2	5/8	12
41-3714-QZ2	7-1/4	3-3/4	6	5/8	2-1/2	5/8	8
41-3714-VZ	7-1/4	3-3/4	6	5/8	3		8
41-3714-VZ1	7-1/4	4-3/4	6-1/8	11/16	3	3/4	12
41-3900-LZ	9	6	7-1/2	7/8	2	1/2	8
41-3900-NZ	9	6	7 1/2	7/8	2-1/4	9/16	8
41-3900-QZ	9	6	7 1/2	7/8	2-1/2	5/8	8
41-3900-SZ	9	6	7 1/2	7/8	2-3/4	5/8	8
WALTERS RV26, RV36, RV40							
41-5358-CZ	3-1/2	2	2-7/8	3/8	1	1/4	8



TAPERED COUPLING PULLERS

MA Part Number	Diameter	Bolt Circle	Bolt Circle	Bolt Circle	Bolt Circle
SAE STANDARD (TWIN DISC., CAPITAL, ALLISON, ZF)					
<u>21577</u>	5	3-1/4	4-1/4		
<u>21578</u>	5	2-7/8	3-1/4	3-7/8	4-1/4
<u>21580</u>	5-3/4	4-3/4			